

PRIME-HEAT Verticals



Cost Effective Solution For Low Temperature Heating Systems



Maximum Heat Outputs & Space Saving Design

- Suitable for use with heat pumps
- Sleek look with the elegant front panel
- Perfect solution for narrow spaces
- Easy installation by means of bottom middle connection
- High efficient, energy saving, sleek design
- Accessory kit with brackets included, purger cap blind cap, screws and plugs
- Corrosion resistant



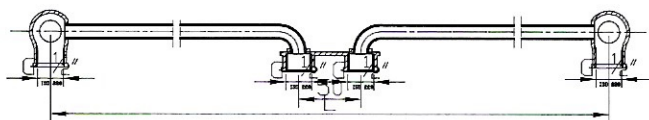
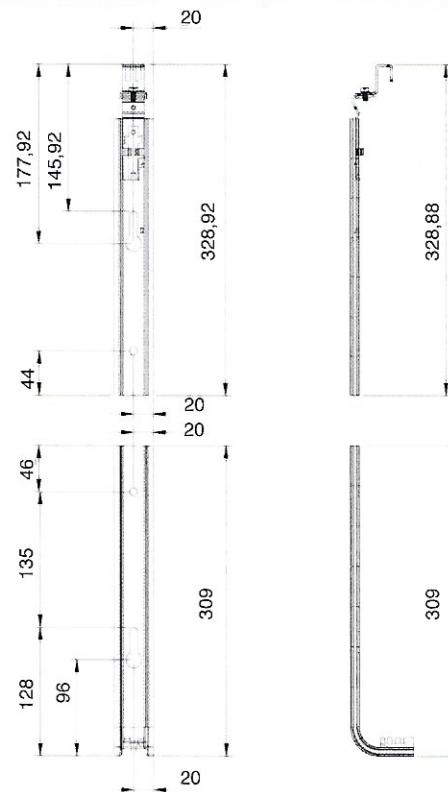
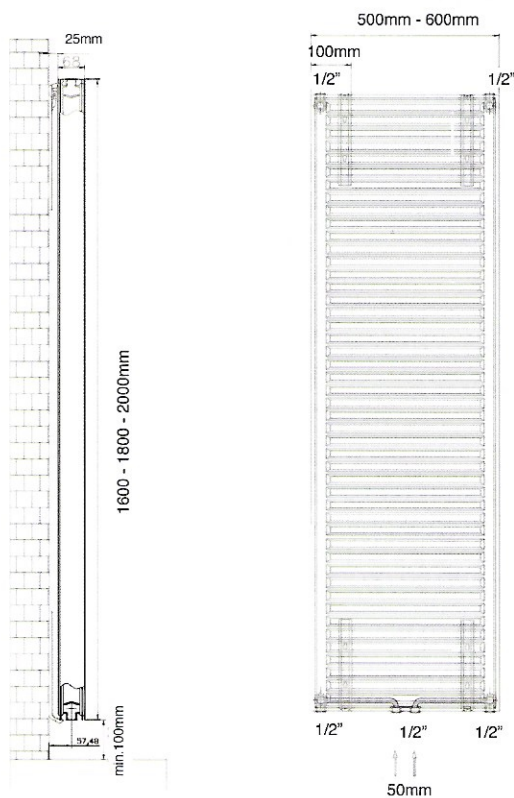
100% Test pressure - 13 bar	Colour - RAL 9016
Max. Working pressure - 10 bar	Connection - 4 DIN G $\frac{1}{2}$ "
Max. Water temperature - 100C	EN442 Certified

PRIME-HEAT Verticals



PRIME-HEAT Verticals Heat Output Chart

500mm Wide Height	Part No.	DT 22.5		DT30		DT50	
		Watts	BTU	Watts	BTU	Watts	BTU
1600	PV1600x500	502	1713	726	2477	1410	4811
1800	PV1800x500	564	1924	817	2788	1586	5411
2000	PV2000x500	627	2139	907	3095	1762	6012
600mm Wide Height	Part No.	DT22.5		DT30		DT50	
		Watts	BTU	Watts	BTU	Watts	BTU
1600	PV1600x600	579	1976	837	2856	1627	5551
1800	PV1800x600	651	2221	942	3214	1829	6241
2000	PV2000x600	723	2467	1046	3569	2032	6933



PANEL	500	600
L	450	550

PRIME-HEAT Verticals		
Height	Weight	Water Content
	Kg/M	Lt/M
500	23.75	4.97
600	28.12	5.75



THERMTEK

Thermtek Limited
Carrigaline Industrial Park,
Carrigaline,
Co. Cork.

Tel: +353 (21) 4377858
Fax: +353 (21) 4377864
Email: info@thermtek.ie
www.thermtek.ie