

INSTANTOR[®] PRESS SYSTEM

SANBRA FYFFE

The makers of INSTANTOR[®]

CONEX Works,
Santry Avenue,
Dublin 9, Ireland
Tel: 00 353 (0)1 842 6255
Fax: 00 353 (0)1 842 6134
Email: sales@sanbra.ie

WRAS
APPROVED PRODUCT



QUALITY
I.S. EN ISO 9001:2015
NSAI Certified



MULTILAYER
PIPING SYSTEMS
I.S. EN ISO 21003-1:2008
NSAI Certified

INSTANTOR® PRESS - SYSTEM

PRODUCT OVERVIEW

NSAI Certified to EN ISO 21003 and WRAS approved. INSTANTOR® Press fittings are manufactured using the same high-grade CW617N brass as our market leading range of INSTANTOR® Brass Compression fittings. Every fitting features two EPDM O rings on each connection which, when pressed correctly, delivers a water-tight seal in seconds. Quick to install in three simple steps – **Cut, Calibrate & Press**, saving on time and costs as less fittings are required when compared with traditional plumbing methods. INSTANTOR® Press fittings are designed for use in sanitary water supply and heating systems.



View video on www.sanbra.ie

Max Operating Pressure: 10 bar
Max Operating Temperature: 95°C
Max Peak Temperature (at 1 hour) 110°C
Above specs relate to Instantor Press System combined with Instantor Pex-Al-Pex Multi Layer Pipe

FEATURES

- Brass body manufactured from CW617N brass to EN ISO 21003.
- Suitable for use with the following pipes:
 - Aluminium plastic composite / PE-X / PE-RT / PB/ Steel plastic composite
 - Manufactured as standard for use with Aluminium plastic composite pipe.
- Operating Temperatures 0°C to 110°C
- 304 Stainless Steel sleeves
- Three viewing inspection windows per stainless steel sleeve to allow a visual check so as to ensure the pipe is correctly inserted
- Application class: 2/6 bar, class 5/6 bar
- Available in sizes 16mm, 20mm, 26mm and 32mm
- TH profile
- EPDM O-rings

INSTALLATION INSTRUCTIONS

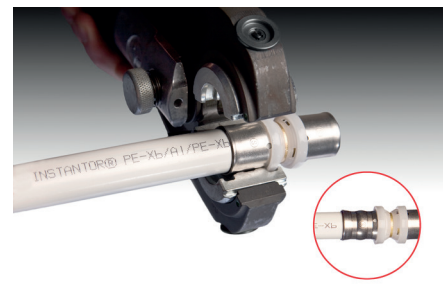
1. Cut – Cut the pipe squarely to desired length using an appropriate cutting tool
2. Calibrate – Insert the reamer into the cut pipe and rotate, pushing slightly to remove all burrs and rough edges. NOTE, a poorly calibrated pipe could damage the O rings on insertion.
3. Connect and Press – Connect the pipe and fitting and check pipe is fully inserted in the inspection windows. The white of the pipe must be viewable through these holes. DO NOT USE SEALING AGENTS SUCH AS PTFE TAPE OR JOINTING COMPOUND. Use TH Profile Jaws to press.



CUT



CALIBRATE



PRESS

FITTINGS

IP10 STRAIGHT COUPLER

CODE	SIZE	PACK QTY	PRICE €
IP10001	16mm	10	
IP10002	20mm	10	
IP10003	26mm	10	
IP10004	32mm	10	



IP10 STRAIGHT REDUCER

CODE	SIZE	PACK QTY	PRICE €
IP10021	20 x 16mm	10	
IP10031	26 x 16mm	10	
IP10032	26 x 20mm	10	
IP10042	32 x 20mm	10	
IP10043	32 x 26mm	10	



IP11 STRAIGHT COUPLER M.I. X PIPE

CODE	SIZE	PACK QTY	PRICE €
IP11001	½" M x 16mm	10	
IP11012	½" M x 20mm	10	
IP11013	½" M x 26mm	10	
IP11021	¾" M x 16mm	10	
IP11002	¾" M x 20mm	10	
IP11023	¾" M x 26mm	10	
IP11032	1" M x 20mm	10	
IP11003	1" M x 26mm	10	
IP11034	1" M x 32mm	10	
IP11004	1¼" M x 32mm	10	



IP12 STRAIGHT COUPLER F.I. X PIPE

CODE	SIZE	PACK QTY	PRICE €
IP12001	½" F x 16mm	10	
IP12013	½" F x 26mm	10	
IP12021	¾" F x 16mm	10	
IP12002	¾" F x 20mm	10	
IP12023	¾" F x 26mm	10	
IP12032	1" F x 20mm	10	
IP12003	1" F x 26mm	10	
IP12034	1" F x 32mm	10	
IP12004	1¼" F x 32mm	10	



IP13 ADAPTOR

CODE	SIZE	PACK QTY	PRICE €
IP13001	½" C x 16mm	10	
IP13002	¾" C x 20mm	10	
IP13021	¾" C x 16mm	10	
IP13023	¾" C x 26mm	10	
IP13033	1" C x 26mm	10	
IP13034	1" C x 32mm	10	



IP15 ELBOW

CODE	SIZE	PACK QTY	PRICE €
IP15001	16mm	10	
IP15002	20mm	10	
IP15003	26mm	10	
IP15004	32mm	10	



IP15 RADIATOR EXTENSION ELBOW

CODE	SIZE	PACK QTY	PRICE €
IP15010	16mm x 300mm	10	



IP16 ELBOW M.I. X PIPE

CODE	SIZE	PACK QTY	PRICE €
IP16001	½" M x 16mm	10	
IP16012	½" M x 20mm	10	
IP16002	¾" M x 20mm	10	
IP16023	¾" M x 26mm	10	
IP16032	1" M x 20mm	10	
IP16003	1" M x 26mm	10	
IP16034	1" M x 32mm	10	
IP16004	1¼" M x 32mm	10	



IP17 ELBOW F.I. X PIPE

CODE	SIZE	PACK QTY	PRICE €
IP17001	½" F x 16mm	10	
IP17012	½" F x 20mm	10	
IP17013	½" F x 26mm	10	
IP17002	¾" F x 20mm	10	
IP17023	¾" F x 26mm	10	
IP17032	1" F x 20mm	10	
IP17003	1" F x 26mm	10	
IP17034	1" F x 32mm	10	
IP17004	1¼" F x 32mm	10	



IP18 EQUAL TEE

CODE	SIZE	PACK QTY	PRICE €
IP18001	16mm	10	
IP18002	20mm	10	
IP18003	26mm	10	
IP18004	32mm	10	



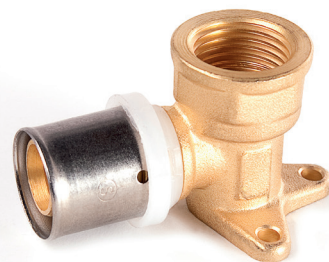
IP18 REDUCING TEE

CODE	SIZE	PACK QTY	PRICE €
IP18112	16 x 16 x 20mm	10	
IP18211	20 x 16 x 16mm	10	
IP18212	20 x 16 x 20mm	10	
IP18223	20 x 20 x 26mm	10	
IP18311	26 x 16 x 16mm	10	
IP18312	26 x 16 x 20mm	10	
IP18313	26 x 16 x 26mm	10	
IP18221	20 x 20 x 16mm	10	
IP18322	26 x 20 x 20mm	10	
IP18323	26 x 20 x 26mm	10	
IP18331	26 x 26 x 16mm	10	
IP18332	26 x 26 x 20mm	10	
IP18334	26 x 26 x 32mm	10	
IP18414	32 x 16 x 32mm	10	
IP18424	32 x 20 x 32mm	10	
IP18432	32 x 26 x 20mm	10	
IP18433	32 x 26 x 26mm	10	
IP18434	32 x 26 x 32mm	10	
IP18441	32 x 32 x 16mm	10	
IP18442	32 x 32 x 20mm	10	
IP18443	32 x 32 x 26mm	10	



IP19 WALLPLATE ELBOW

CODE	SIZE	PACK QTY	PRICE €
IP19001	½" F x 16mm	10	
IP19012	½" F x 20mm	10	



IP30 TEE

CODE	SIZE	PACK QTY	PRICE €
IP30001	16 x 16 x ½" F	10	
IP30002	20 x 20 x ¾" F	10	
IP30003	26 x 26 x 1" F	10	
IP30443	32 x 32 x 1" F	10	



IP51 STOP END

CODE	SIZE	PACK QTY	PRICE €
IP51001	16mm	10	
IP51002	20mm	10	
IP51003	26mm	10	
IP51004	32mm	10	



IP20 NUT AND INSERT ADAPTOR TO COPPER COMPRESSION

CODE	SIZE	PACK QTY	PRICE €
IP20001	½" x 16mm	10	
IP20002	15mm x 16mm	10	
IP20003	¾" x 20mm	10	
IP20004	1" x 26mm	10	
IP20005	22mm x 20mm	10	
IP20006	28mm x 26mm	10	
IP20001CP	½" x 16mm	10	
IP20002CP*	15mm x 16mm	10	

*IP2000CP is suitable for use with all 15mm Sanbra Fyffe Standard TRV's and Rad Valves.



IP20 PRESS ADAPTOR TO COPPER COMPRESSION

CODE	SIZE	PACK QTY	PRICE €
IP20060	½" x 16mm	10	
IP20061	15mm x 16mm	10	



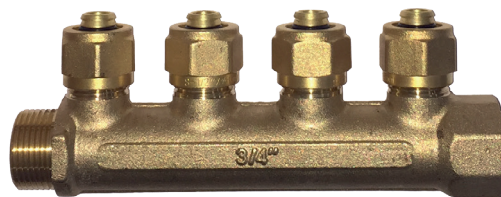
IP80 LEVER BALL VALVE

CODE	SIZE	PACK QTY	PRICE €
IP80001	16mm	10	
IP80002	20mm	5	
IP80003	26mm	5	
IP80004	32mm	5	



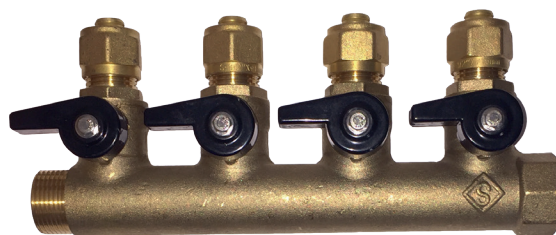
BRASS MANIFOLDS (WITH ADAPTORS)

CODE	SIZE	PRICE €
771871K	¾" x ½" 2 Port Manifold	
771874K	¾" x ½" 3 Port Manifold	
771877K	¾" x ½" 4 Port Manifold	
771872K	1" x ½" 2 Port Manifold	
771875K	1" x ½" 3 Port Manifold	
771878K	1" x ½" 4 Port Manifold	



BRASS MANIFOLD WITH ISO VALVES (AND ADAPTORS)

CODE	SIZE	PRICE €
771892K	¾" x ½" 2 Port Manifold with ISO Valve	
771894K	¾" x ½" 3 Port Manifold with ISO Valve	
771895K	¾" x ½" 4 Port Manifold with ISO Valve	



SHOWER BRACKET

CODE	SIZE	PRICE €
IP93001	16mm	



TOOLS AND ACCESSORIES

PIPE REAMER

CODE	SIZE	BOX QTY	PRICE €
IP20010	16mm – 26mm	40	
IP20011	20mm – 32mm	30	



PIPE CUTTER

CODE	SIZE	BOX QTY	PRICE €
IP20016	Up to 32mm		



IP20 BENDING SPRING PACK (INNER & EXTERNAL)

CODE	SIZE	PACK QTY	PRICE €
IP20030	16mm	10	
IP20031	20mm	10	
IP20032	26mm	10	
IP20033	32mm	5	



PIPE STAPLE

CODE	SIZE	PACK QTY	PRICE €
IP20014	16mm x 40mm	30	



MANUAL DEBURRING TOOL

CODE	SIZE	PRICE €
IP20015	Ø3-35mm	



TOOLS AND ACCESSORIES

PRESS GUN 14.4V

CODE	SIZE	PRICE €
IP20020 REMS 578X04	REMS Mini Press Gun 14.4V Battery Incl. 16, 20, 26mm TH Jaws & Case	
IP20021	REMS 14.4V Battery	
IP20022	16mm TH Jaws	
IP20023	20mm TH Jaws	
IP20024	26mm TH Jaws	
IP20025	32mm TH Jaws	



PRESS GUN 22V

CODE	SIZE	PRICE €
IP20041 REMS 578X05	REMS Mini Press Gun 22V Battery Incl. 16, 20, 26mm TH Jaws & Case	
IP20040 REMS 578X08	Straight REMS Mini Press Gun 22V Battery Incl. 16, 20, 26mm TH Jaws & Case	

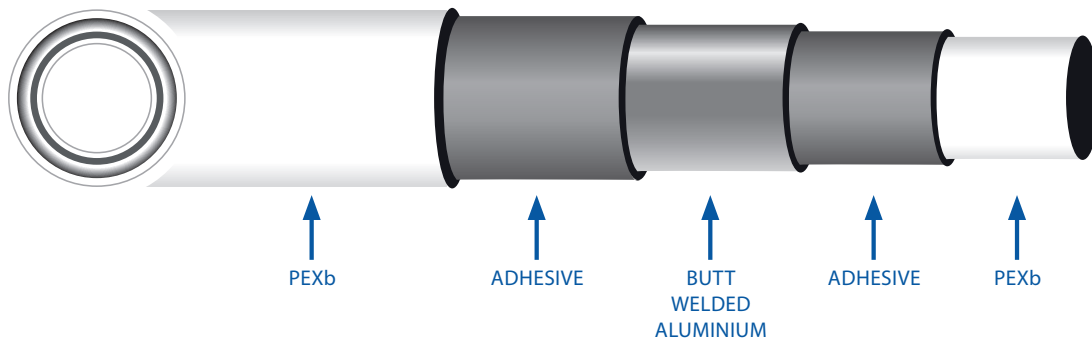


MANUAL PRESS TOOL

CODE	SIZE	PRICE €
IP20026	REMS Manual Press Tool	
IP20027	16mm TH Jaws	
IP20028	20mm TH Jaws	
IP20029	26mm TH Jaws	



INSTANTOR® PEX-AL-PEX



PRODUCT OVERVIEW

INSTANTOR® Pex-Al-Pex (PE-xB/Al/PE-xB) is a multilayer pipe NSAI Certified to EN ISO 21003 and WRAS approved, combining all the advantages of metal and plastic pipe. This pipe is constructed with a double inner and outer layer of Silane method crosslinked polyethylene PE-xB, then bound by quality adhesive to a longitudinally TIG butt welded 100% oxygen tight aluminium layer. It is this aluminium layer that allows the pipe to maintain its shape after bending. Total hygiene and high corrosion resistance is ensured as fluids come in contact with the inner PE-xB layer only.

MULTI APPLICATIONS:

Potable water, underfloor heating & all general plumbing and heating applications.

FEATURES:

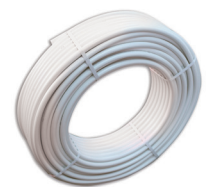
- This is a more cost effective pipe system when compared with conventional piping systems
- All the combined advantages of metal and plastic pipes
- Lightweight, flexible and maintains its shape after bending
- Cost effective - requires less fittings than traditional methods
- Available in
 - **Coils** - 16mm x 100M, 16mm x 500mm, 20mm x 100M, 26mm x 50M, 32mm x 50M
 - **Insulated Coils** - 16mm x 100M, 20mm x 50M, 26mm x 25M, 32mm x 25M, 26mm x 50M
 - **Lengths** – 16mm, 20mm, 26mm, 32mm x 4M
- Butt welded aluminium pipe is 100% oxygen & water vapour tight
- Excellent heat preservation
- Highly corrosion resistant
- Low factor of linear expansion
- Low noise emission due to plastic properties of pipe
- Highly temperature and pressure resistant
- Guarantee – 10 years on system, 50 years on materials

INSTANTOR® PEXB/AL/PEXB PIPE LENGTHS



CODE	SIZE	BUNDLE QTY	PRICE PER LENGTH €
IPAP111	16 x 4M	10	
IPAP112	20 x 4M	10	
IPAP113	26 x 4M	10	
IPAP114	32 x 4M	10	

INSTANTOR® PEXB/AL/PEXB PIPE COILS



CODE	SIZE	PALLET QTY	PRICE PER COIL €
IPAP101	16 x 100M	10	
IPAP102	20 x 100M	10	
IPAP103	26 x 50M	10	
IPAP104	32 x 50M	10	
IPAP105	16 x 500M	5	

INSTANTOR® PEXB/AL/PEXB PIPE

TECHNICAL SPECIFICATIONS

UNIT OF MEASUREMENT		IPAP101	IPAP102	IPAP103	IPAP104	IPAP105
Outer Diameter	mm	16	20	26	32	16
Inner Diameter	mm	12	16	20	26	12
Weight	kg	0.110	0.147	0.268	0.355	0.550
Thickness of Aluminium	mm	0.25	0.3	0.35	0.5	0.25
Total Thickness	mm	2	2	3	3	2
Roll Length	M	100	100	50	50	500
Volume of water	l/m	0.113	0.201	0.314	0.531	0.113
Internal roughness	µm	7				
Thermal conductivity at 20°C	W/mk	0.43				
Coefficient of expansion	mm/m°C	0.025				
Degree of crosslinking	°C	≥65°C				
Oxygen permeability	mg/l	0				
Colour		White				
Type		PE-xB/Al/PE-xB multilayer pipe				
Field of application		Plumbing in civil, industrial and commercial applications				
Fluid		Potable water, technical water, and water glycol(*)				
Max peak temperature	°C	110				
Minimum operating temperature(*)	°C	0				
Maximum operating pressure at 95°C	bar	6				
Maximum operating pressure at 20°C	bar	10				
Duration at 95°C and 6 bar		Time duration to be determined by service conditions				
Storage		Avoid prolonged exposure to direct sunlight				
Minimum bend radius		5 times the diameter				

(*) In the case of water glycol, in order to define the minimum operating temperature, it is necessary to know the elements of the mixture and the various concentrations.

APPLICATION CLASS TABLE (ISO 21003-1)

Application Class	Design Temperature T_D °C	Time ^b at T_D Years	T_{max} °C	Time at T_{max} years	T_{mal} °C	Time at T_{mal} h	Typical field of application
1 ^a	60	49	80	1	95	100	Hot water supply (60°C)
2 ^a	70	49	80	1	95	100	Hot water supply (70°C)
4 ^b	20 + Cumulative 40 + Cumulative 60	2.5 20 25	70	2.5	100	100	Underfloor heating and low-temperature radiators
5 ^b	20 + Cumulative 60 + Cumulative 80	14 25 10	90	1	100	100	High-temperature radiators

^a A country may select either class 1 or class 2 in conformity with its nation regulations.

^b Where more than one design temperature for time and associated temperature appears for any class, they should be aggregated.

"Plus cumulative" in the table implies a temperature profile of the mentioned temperature over time (e.g. the design temperature profile for 50 years for class 5 is 20°C for 14 years followed by 60°C for 25 years, 80°C for 10 years, 90°C for 1 year and 100°C for 100h).

NOTE: For values of T_D , T_{max} and T_{mal} in excess of those in the table, this International Standard does not apply.

INSTANTOR® PEXB/AL/PEXB INSULATED PIPE COILS

PRODUCT OVERVIEW

INSTANTOR® PEX-AL-PEX (PE-xB/Al/PE-xB) INSULATED multilayer pipe is an insulated multilayer pipe for multi-applications. Enclosed in a scratch resistant, closed cell polyethylene foam insulating sheath, this pipe is constructed with a double inner and outer layer of Silane method crosslinked polyethylene PE-xB, then bound by quality adhesive to a butt welded 100% oxygen tight aluminium layer. It is this aluminium layer that allows the pipe to maintain its shape after bending. Total hygiene and high corrosion resistance is ensured as fluids come in contact with the inner PE-xB layer only.

MULTI APPLICATIONS:

Potable water and all general plumbing and heating applications.



WHITE		RED		BLUE		SIZE	PALLET QTY
IPAP201		IPAP301		IPAP401		16 X 100M	10
IPAP202		IPAP302		IPAP402		20 X 50M	10
IPAP203		IPAP303		IPAP403		26 X 25M	10
IPAP204		IPAP304		IPAP404		32 x 25M	10
IPAP205		-		-		26 x 50M	-

INSTANTOR® PEXB/AL/PEXB INSULATED PIPE COILS

TECHNICAL SPECIFICATIONS

	UNIT OF MEASUREMENT	IPAP201 IPAP301 IPAP401	IPAP202 IPAP302 IPAP402	IPAP203 IPAP303 IPAP403	IPAP204 IPAP304 IPAP404	IPAP205
Outer diameter	mm	16	20	26	32	26
Sheath thickness for heating	mm	6	6	6	6	6
Diameter pipe + sheath(heating)	mm	28	32	38	44	38
Aluminium thickness	mm	0.25	0.3	0.35	0.5	0.35
Roll length	M	100	50	25	25	50
Volume of water	l/m	0.113	0.201	0.314	0.531	0.314
Internal roughness	µm	7				
Thermal conductivity at 20°C	W/mk	0.04				
Coefficient of expansion	kg/m ³	35 to 45				
Degree of crosslinking	%	≥65%				
Oxygen permeability	mg/l	0				
Colour		White / Red / Blue				
Pipe material		PE-xB/Al/PE-xB multilayer pipe				
Sheath material		closed-cell polyethylene foam PE-LD				
Scratch-resistant finish layer		closed-cell polyethylene foam PE-LD				
Field of application		Plumbing in civil, industrial and commercial applications				
Fluid		Potable water, technical water, and water glycol(*)				
Max peak temperature	°C	110				
Minimum operating temperature(*)	°C	0				
Maximum operating pressure at 95°C	bar	6				
Maximum operating pressure at 20°C	bar	10				
Duration at 95°C and 6 bar		Time duration to be determined by service conditions				
Storage		Avoid prolonged exposure to direct sunlight				
Minimum bend radius(**)		5 times the diameter				
Insulation Thickness (round)	mm	6				
Fire Classification		B2 (DIN 4102) / E (EN 13501-1:2007+A1:2009)				

(*)Reference is made to a sheathed pipe and the use of a suitable water glycol mix.

(**)Take the thickness of the sheath into account when bending a pipe with a bender.

e.g.: Ø16 sheath: total thickness=28mm,use bender with Ø26 profile.

See page 13 for Application Class Table (ISO 21003-1)

INSTANTOR® PRESS-SYSTEM

CERTIFICATION



This certifies that

SANBRA FYFFE LTD.

has had the undermentioned product examined, tested and found, when correctly installed, to comply with the requirements of the United Kingdom Water Supply (Water Fittings) Regulations and Scottish Water Byelaws.

INSTANTOR RANGE OF U AND TH PRESS FITTINGS FOR USE WITH INSTANTOR PEX-AL-PEX PIPE

The certificate by itself is not evidence of a valid WRAS Approval. Confirmation of the current status of an approval must be obtained from the WRAS Directory (www.wras.co.uk/directory)

The product so mentioned will be valid until the end of:


July 2022

1707001

Certificate No.


 J. Funnell
Secretary


 K. Hussey
Chairman, Product Assessment Group



This certifies that

SANBRA FYFFE LTD.

has had the undermentioned product examined, tested and found, when correctly installed, to comply with the requirements of the United Kingdom Water Supply (Water Fittings) Regulations and Scottish Water Byelaws.

"INSTANTOR PRESS" RANGE OF PRESS FIT FITTINGS FOR USE WITH INSTANTOR MULTI-LAYERED PIPE (FOR MODELS AND SIZES COVERED BY THE SCOPE OF THE APPROVAL PLEASE CONSULT THE ACCOMPANYING WRAS APPROVAL LETTER)


The certificate by itself is not evidence of a valid WRAS Approval. Confirmation of the current status of an approval must be obtained from the WRAS Directory (www.wras.co.uk/directory)


The product so mentioned will be valid until the end of:

April 2023

1804354

Certificate No.


 J. Funnell
Secretary


 K. Hussey
Chairman, Product Assessment Group



NSAI

Licence to use the Irish Standard Mark

on or in connection with

Multilayer piping systems PEX for hot and cold water installations inside buildings

To indicate conformity to

I.S. EN ISO 21003-1

For INSTANTOR® Multilayer Pipe and INSTANTOR® Press fittings up to 32mm for application class/bar: 2/6 & 5/6

Manufactured on behalf of:
 Sanbra Fyffe Ltd
 Conex Works
 Santry Avenue
 Dublin 9

Distributed by:
 Sanbra Fyffe Ltd
 Conex Works
 Santry Avenue
 Dublin 9

The NSAI, in exercise of the power conferred on it by subsection (1) of Section 21 of the National Standards Authority Act (No. 28 of 1996) hereby grants a licence to use the Irish Standard Mark on or in connection with the INSTANTOR® Press System, composed of INSTANTOR® PEX-20 / AL / PEX-30 multilayer pipe and INSTANTOR® TH profile press fittings, to indicate conformity to EN ISO 21003:2008 to the above mentioned company.

An Irish Standard Mark Licence authorises the licensee to use the Irish Standard Mark, in conjunction with the relevant Irish Standard number, on a product which is the subject of a licence. And which conforms to the relevant Irish Standard specification. The licence is not assignable, and shall remain in force until revoked by, or surrendered to the licensee to the NSAI.


Approved by:
 Director, Sustainability and Built Environment, NSAI

Licence Number: 1.153.002
 Date of issue: 12 February 2018
 Expiry date: 12 February 2023
 This certificate is subject to annual revision

All valid certifications are listed on NSAI's website - www.nsa.ie. The continued validity of this certificate may be verified under "Certified Company Search".

NSAI (National Standards Authority of Ireland), 1 South Square, Northwood, Santry, Dublin 9. Ireland T: +353 (0)1 860 1000 E: info@nsai.ie www.nsa.ie or www.nsa.ie NSAI is a member of the European Network of Standards Organizations (ENSO).

CERT-008: ISM NL AA (6)